

Charred.Brochure

TIMBER RANGE



INNERSPACE

CHESHIRE

We design, We make, We fit We bring joy

Innerspace Cheshire is based in Whitchurch in the North West of England where we make products that are kind to people, the planet and animals.

Our local, dedicated team of makers hand craft our product range at our workshop. And our installation team travel up and down the country to fit all products nationwide.



Charred.

natural and organic.
fire resistant.
durable.

Innerspace Cheshire **charred** timber is simply burnt wood. Originating from traditional Japanese techniques, charred timber is primarily used to clad walls for enhanced durability and appearance.

If you're aiming to create a dark and atmospheric interior, the striking and rustic look of charred timber makes it an excellent choice for distinctive feature walls.



Product Selection.

Charred.

Charred **light** 5

Charred **heavy** 9

Charred **crackly** 13

Charred **mixed** 17

Spec.

Charred **guide** 21

Charred **specification** 23

Charred **samples** 25

Charred.light

TIMBER RANGE



Charred **light** planks have a moderate level of charring, resulting in a reddish-brown shade. Striking a balance between darkness and lightness, it is the preferred choice if you want to incorporate char while preserving the natural colour of the wood grain.



light.

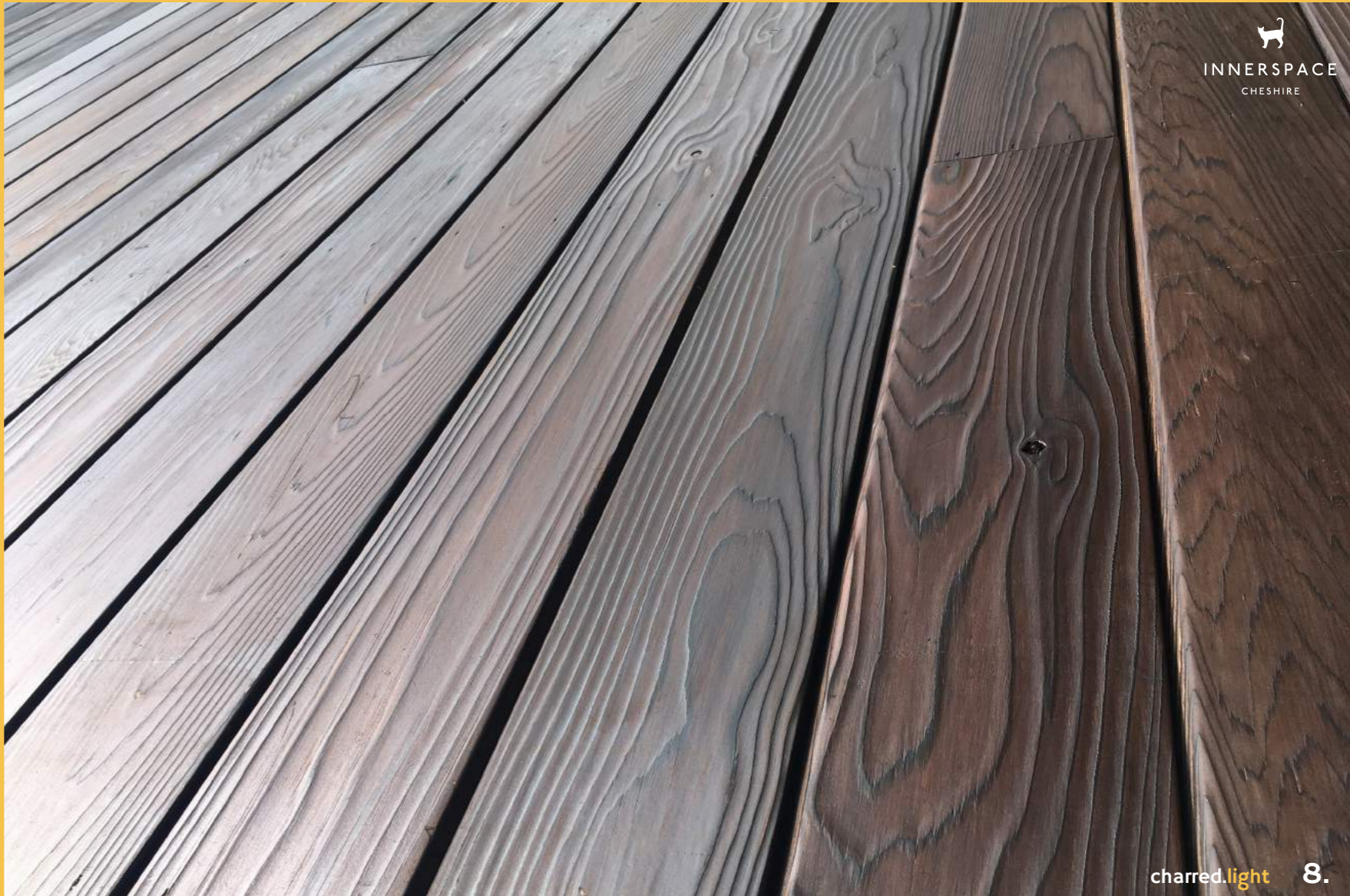
The image shows a close-up of vertical wooden planks with a charred finish. The planks are arranged side-by-side, showing natural wood grain patterns and knots. The color is a deep, dark brown with some lighter, charred areas. The lighting is even, highlighting the texture of the wood.

Charred.light level 1

Charred.light level 2




INNERSPACE
CHESHIRE



INNERSPACE
CHESHIRE

Charred.heavy

TIMBER RANGE



Charred **heavy** is a char applied to real Siberian larch to achieve a dark finish. This moderate charring results in a rich, matte black hue while still allowing the natural grain to prominently emerge.



heavy.

Charred.heavy **level 3**

Charred.heavy **level 4**





Charred.crackly

TIMBER RANGE



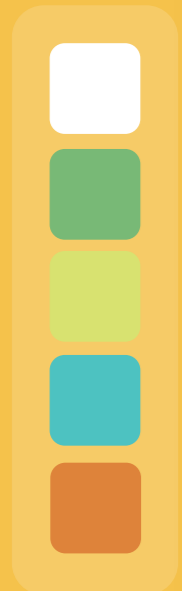
Charred **crackly** is an intense charring technique applied to real Accoya timber. This process leaves a beautiful sheen and distinctive crackling to the burned Accoya timber.



Charred.crackly **level 5**



optional colour strips to add...



choose from the Little Greene Company range

Charred.mixed

TIMBER RANGE



Charred **mixed** is a blend of light, heavy, and crackly planks arranged in a square pattern. The mix of various char levels, textures, and rust colours form an exquisite backdrop, making it an impressive feature wall for interior spaces.

mixed.



Charred.mixed






INNERSPACE
CHESHIRE

Charred.guide
TIMBER RANGE


INNERSPACE
CHESHIRE

Choose your char level



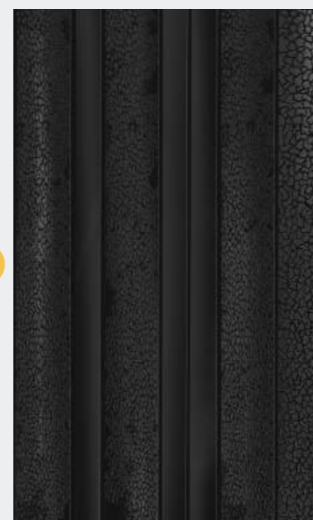
light level 1 or 2

OR



heavy level 3 or 4

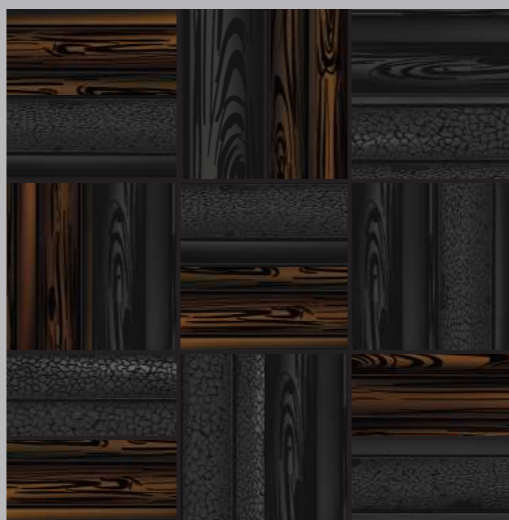
OR



crackly level 5

Optional. mixed

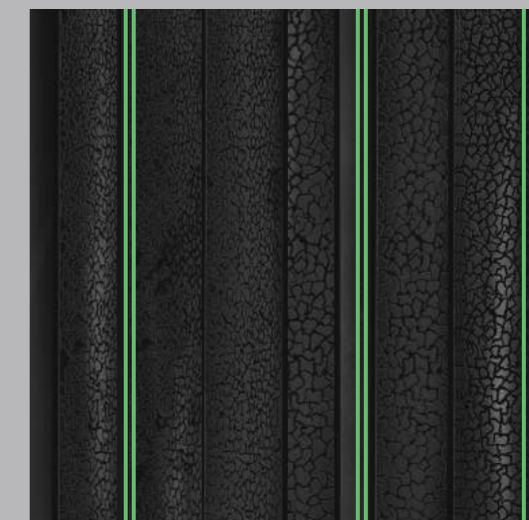
combined light, heavy & crackly planks



mixed

Optional. colour strips

optional colour strips



planks+colour
Choose from Little Greene Company



Charred.specification

TIMBER RANGE

Specification.

Standard composition.

Charred light
Real Siberian Larch

Charred heavy
Real Siberian Larch

Charred crackly
Real Accoya

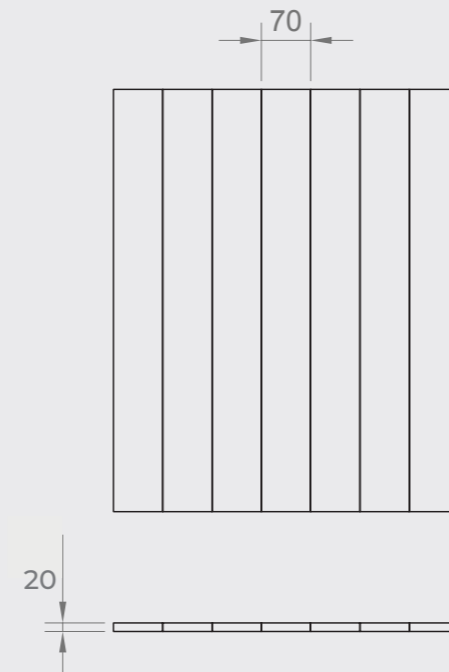
Charred mixed
Siberian Larch & Accoya

Dimensions.
Made to order.

Weight.
Made to order.

Fire.
The panels can be fire rated to Euro class B

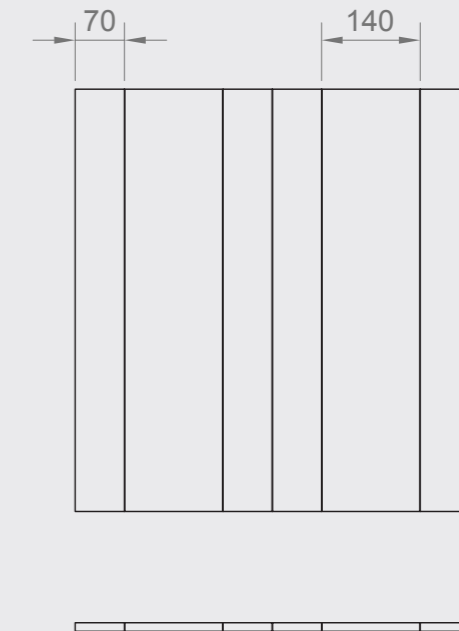
Planks available in 70mm(W)



Planks available in 140mm(W)



Planks available in 70mm(W) + 140mm(W)



Charred.samples
TIMBER RANGE


INNERSPACE
CHESHIRE

Sample selection



Charred.light Level 1



Charred.light Level 2



Charred.heavy Level 3



Charred.heavy Level 4



Charred.crackly Level 5



Charred+colour
special request only.

We'd love to hear from you.

01270 625043

office@innerspacecheshire.co.uk

www.innerspacecheshire.co.uk



INNERSPACE

CHESHIRE